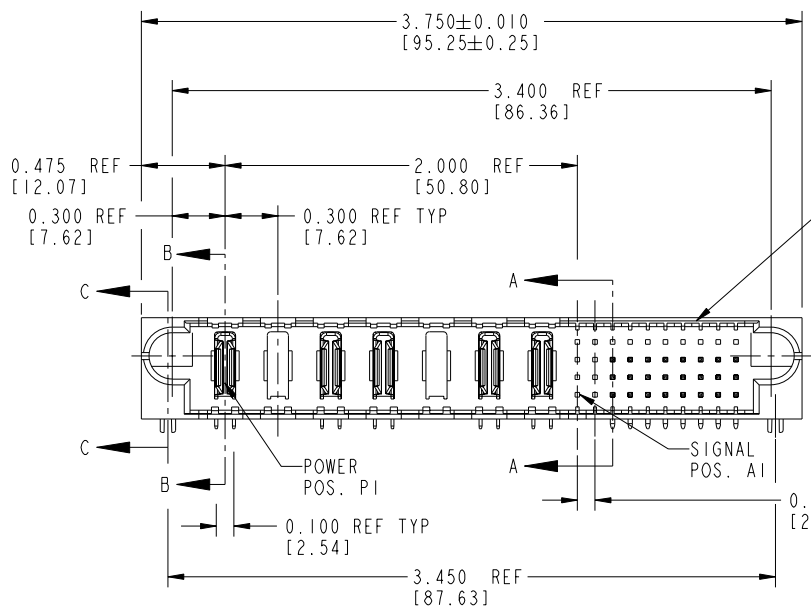
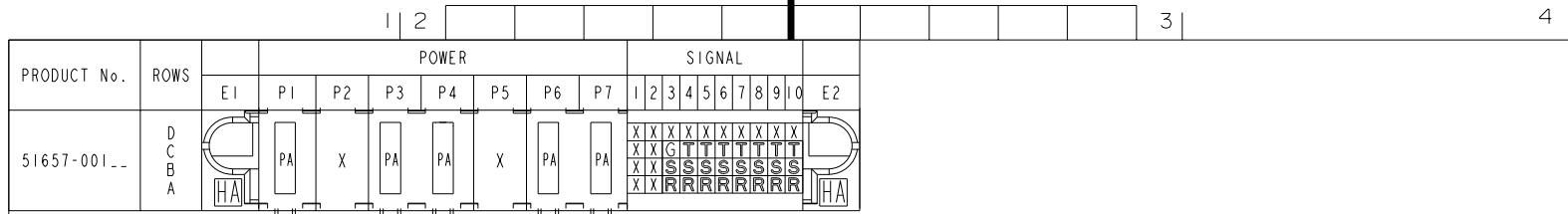
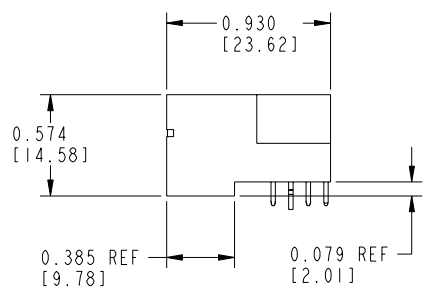


Tous droits strictement réservés. Reproduction ou communication à des tiers interdite sous quelque forme que ce soit sans autorisation écrite du propriétaire. Propriété de c FCI. Droits de reproduction FCI.

All rights strictly reserved. Reproduction or issue to third parties in any form whatever is not permitted without written authority from the proprietor. Property of FCI. Copyright FCI.



SEE NOTE 3



CODE	DIM "M" ±0.010 [0.25]		CONTACT TYPE
G	0.220	[5.59]	SIGNAL
R	0.270	[6.86]	SIGNAL
S	0.270	[6.86]	SIGNAL
T	0.270	[6.86]	SIGNAL
PA	N/A	[N/A]	POWER
HA	N/A	[N/A]	HOLD-DOWN

mat'l code				NOTE 1		tolerances unless otherwise specified		CUSTOMER COPY		 www.fciconnect.com		
ltr	ecn no.	dr	date	linear	.XX±.01/.X±.3	projection	title		7P + 40S			
A	V02392	JRW	10-13-00		.XXX±.005/.XX±.13		RIGHT ANGLE SOLDER HEADER		product family PwrBlade code 213			
B	V11298	JRW	04-23-01	angles	.XXX±.0020/.XXX±.051		size		dwg no 51657 SHEET 1 OF 2			
C	V12541	DAI	12-05-01		0°±2°	scale		1:1				
D	DG05-0375	GuoJM	10/07/05	dr	C. BAROT 05-08-99	size		A				
E	DG06-0011	CS	01/09/06	enr	J. BROWN 05-08-99	size		A				
				chr	J. BROWN 05-08-99	size		A				
				appd	J. BROWN 08-20-99	size		A				
sheet index	revision sheet	E	E									
		1	2									

form no. 7530-001-103

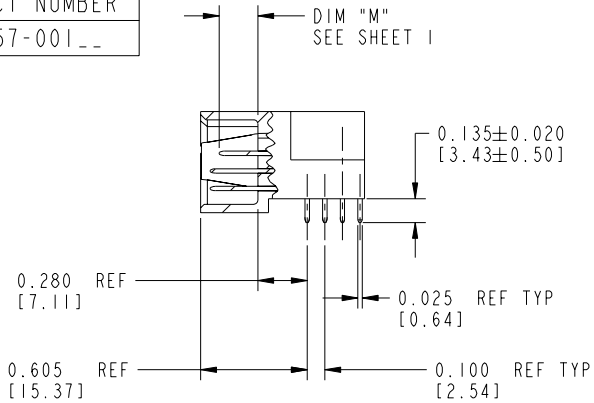
cage code 22526

Tous droits strictement réservés. Reproduction ou communication à des tiers interdite sous quelque forme que ce soit sans autorisation écrite du propriétaire. Propriété de FCI. Droits de reproduction FCI.

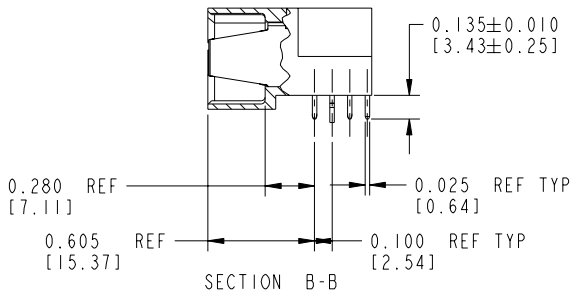
All rights strictly reserved. Reproduction or issue to third parties in any form whatever is not permitted without written authority from the proprietor. Property of FCI. Copyright FCI.

PRODUCT NUMBER
51657-001__

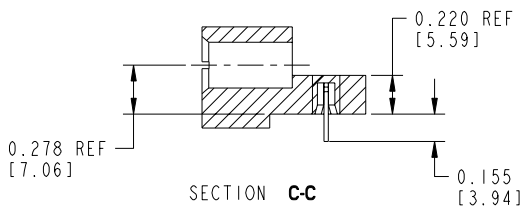
DIM "M"
SEE SHEET 1



SECTION A-A



SECTION B-B



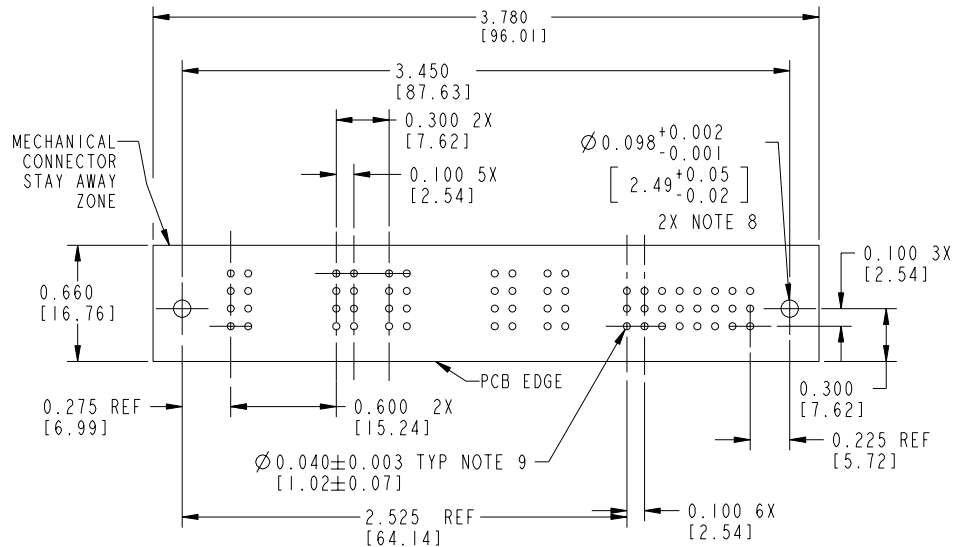
SECTION C-C

CONNECTOR NOTES:

1. HOUSING MATERIAL: UL 94 V-0 GLASS FILLED HIGH TEMP THERMOPLASTIC
POWER CONTACT MATERIAL: COPPER ALLOY
SIGNAL CONTACT MATERIAL: COPPER ALLOY
3. PLATING:
51657,51657LF,PLATING SPEC SEE PRINT:100064183.
3. "MANUFACTURER'S" NAME, P/N, AND DATE CODE TO APPEAR ON THIS SURFACE
4. PRODUCT SPECIFICATION GS-12-149

PCB NOTES:

5. ALL DIMENSIONS ARE BASIC UNLESS OTHERWISE SPECIFIED.
6. ALL THROUGH HOLES ARE LOCATED WITH A TRUE POSITION OF 0.004 [0.10]
7. ALL HOLE DIAMETERS ARE FINISHED HOLE SIZE
8. $\varnothing 0.098 [2.49]$ THROUGH HOLES ARE UNPLATED.
9. $\varnothing 0.0453 \pm 0.0010 [1.151 \pm 0.025]$ DRILLED HOLES PLATED WITH 0.0003 [0.008] MIN SnPb OVER 0.001 [0.03] TO 0.003 [0.08] Cu PLATING TO ACHIEVE A $\varnothing 0.040 \pm 0.003 [1.02 \pm 0.07]$ HOLE.



RECOMMENDED PCB LAYOUT

mat'l code		NOTE 1		tolerances unless otherwise specified		CUSTOMER COPY		 www.fciconnect.com	
ltr	ecn no.	dr	date	linear	.XX±.01/.X±.3	projection	title 7P + 40S		
E					.XXX±.005/.XX±.13		RIGHT ANGLE SOLDER HEADER		
				angles	.XXX±.0020/.XXX±.051		product family	PwrBlade	code
				dr	0°±2°	INCH / MM	size	dwg no	213
				enr		scale	A	51657	SHEET 2
				chr	C. BAROT 05-08-99	1:1			
				appd	J. BROWN 05-08-99				
					J. BROWN 08-20-99				
sheet index	revision sheet								